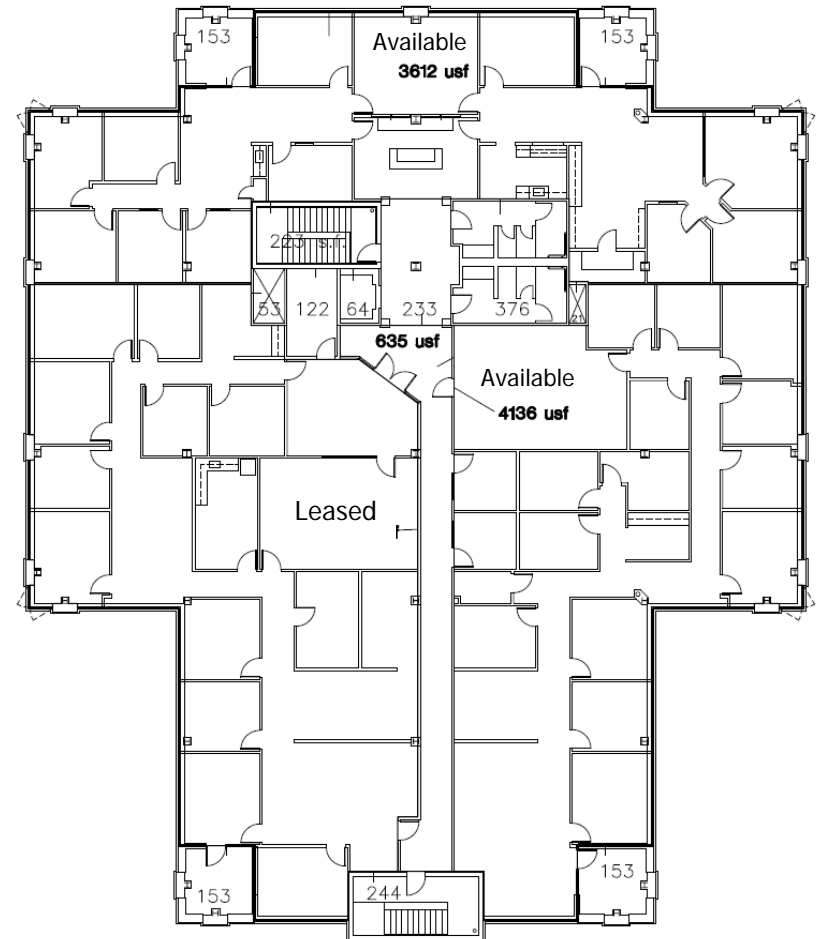


# Pioneer Place I & II



**333 & 343 S. Kirkwood Rd., Kirkwood, MO 63122**  
**Office / Retail**

- Pioneer Place I Office Space
- 3rd Floor—8,884 square feet Full Service Class A Office
- Excellent Demographics
- Convenient Services / Restaurants
- Traffic Count: 50,000 vehicles per day on Kirkwood Road



8,884 Square Feet available on the 3rd Floor

**For further information contact:**  
**314-968-0842**

The information contained herein was obtained from a source we consider to be reliable. While we have no reason to doubt its accuracy, we do not guarantee it. All information contained herein is subject to change without notice.